

# COMMERCIAL LIGHTING EMERGENCY SOLUTION



Lightide HK Industrial Co., Limited

+86-755-83837000

sales@lightideled.com

<https://www.lightide-tech.com>

# COMPANY INTRODUCING



## Flexible Solution

Your satisfaction is our top priority.

Provide you peace of mind by providing you with customized LED fixtures and flex solutions. Our team offers flexible services, such as product development, custom-made services, package design, solving quality and reliability issues, etc.



## Customization

Lightide offers a wide range of product customization features. And we can design and create any modifications as per your request.



## Strict Inspection

In order to ensure non-defective products are exported to the customers, we own a professional team that conducts strict inspections and manufacture according to American UL standards and European IEC standards.

Headquartered in Hongkong, Lightide (HK) Industrial Co., Limited is a market-leading innovator, especially specializes in indoor LED lighting and marine lighting.

With the development of advanced led lighting technology, Lightide Manufactory Co., Ltd. (LMC) was set up in Shenzhen in 2009. By now, we have focused on the lighting industry for 10 years. And we have become one of the commercial & outdoor LED lighting OEM/ODM manufacturers in China.



# OEM SERVICE

# SINCE 1999

Lightide also offers a wide range of product customization features. For instance, specifying led chips or drivers. We can design and create any modifications as per your request. Moreover, you may obtain design assistance, manufacturing, certification of LED fixtures, and control systems from us. Of course, you also can get LED lighting products under your own specifications and brand.



**Quick  
Payback**



**5-10 Year  
Warranty**



**Quality  
Made**





“

“There are many Commercial & Outdoor LED Light Fixtures fitting for your projects. - although I'm not a professional, we've worked with customers from 19 countries. Lightide is without a doubt the most flexible to assist you in any way.”

JAMES TSANG  
Director



## BUSINESS COOPERATION



## Corporate With High-Class Companies



# CERTIFIDE PRODUCTS

Undergo rigorous quality and safety testing, Lightide's products ensure all appropriate certifications, such as cULus/cETLus, CE, and DLC. In other words, what you received are the best products on the market at all times.



## Certificate

Not only are indoor surface mount canopy lights listed as either DLC or ETL, but they are able to accelerate the payback.



## Warranty

You will enjoy the service of 5~10 years of long-term warranty for all the led lighting fixtures.



## Emergency

UL924 & CEC title 20 compliant battery keeps 90~180 minutes of backup lighting when power outages.



## Commercial

They are made of commercial-grade aluminum housing and anti-leakage silicone gaskets.

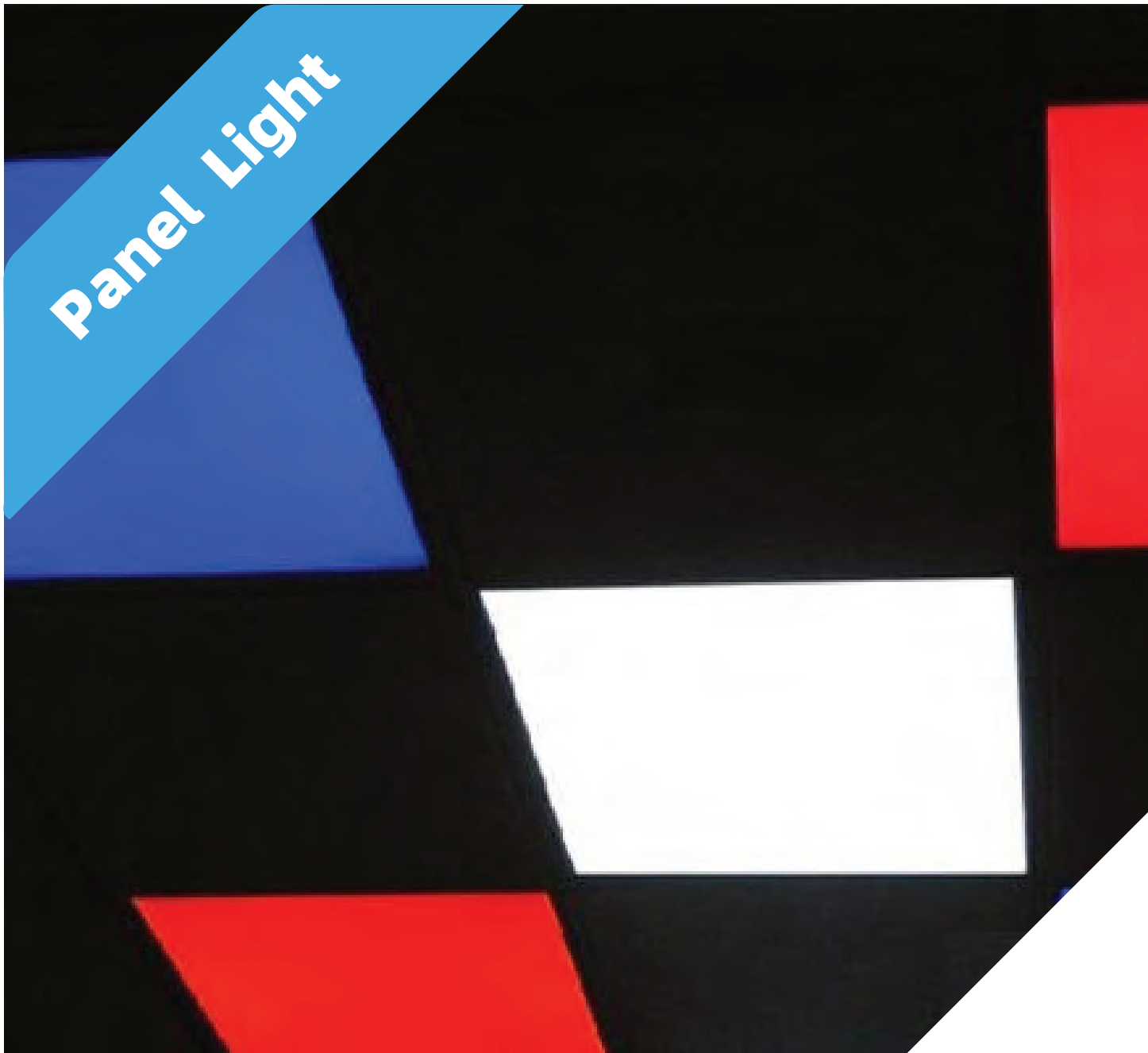




# CONTENTS

Introduction	01
LED Panel Light	11
LED High Bay	23
LED Vapor Tight	27





### Order Information

Company	Product Info.	Size (L)	Size (W)	Power	Voltage	LED	Acce.
LT	PL	03	06	20W	Std.=100-277vac	RGB	SP= Pendent
		06	12	45W	HV= 200-480VAC	RGBW	RC= Recessed
		12		50W	EV=200-240VAC		
				60W			

### Optional Mode-1



### Optional Mode-2



### Optional Mode-3



Smart RGBW LED flat panel light can produce R/G/B/W color changing and CCT changing through smartphone WIFI remote control system. It also is compatible and controlled with IR or 2.4G RF control system.

### Feature

- T4mm Chimei Acrylic LGP
- Beam Angle: 155 Degree
- Dimmable Available
- White Finish Aluminum 6063 Frame
- Warranty: All backed by a 5-year warranty.
- Listed: ETL/cETL, CE/RoHS  
WIFI, Bluetooth, or IR control





CCT Selectable

- 3500K
- 4000K
- 5000K

Zigbee Control



Emergency Backup



LED flat panel light features a slim profile and premium & long life 2835 LED with high lumen 100 LPW. This way they can use 80% less energy than traditional fluorescent lights. They are great for offices, schools, hospitality, healthcare, and other commercial and industrial applications

### Order Information

Company	Product Info.	Size (L)	Size (W)	Power	Voltage	LED	Acce.
LT	PL	03	06	40W	Std.=100-277vac	30K=3000K	DM=1-10VDC DIMMING
		06	12	48W	HV= 200-480VAC	40K=4000K	EM=Emergency Kit
		12		50W	EV=200-240VAC	50K=5000K	ZB=Zigbee
				72W		57K=5700K	
						CCT Changing: 2700~6500K	

### Feature

- Ultra-slim profile design
- T3 Chimei PMMA LGP
- 1-10 VDC driver for dimming
- Wide Input 120-277 volts
- Aluminum-based circuit board
- Field-installable LED emergency driver sold separately
- Warranty: All backed by a 5-year warranty.

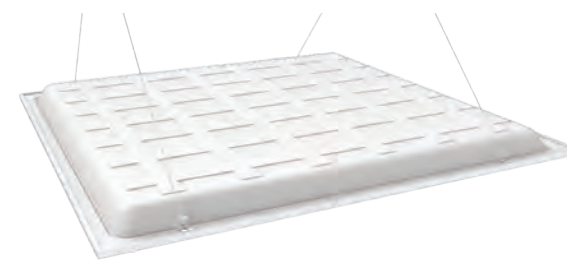






Panel Light

Suspending Kit



Backlit LED Ceiling Light Panels Lighting Fixtures feature optimized light diffusion with a wide beam angle to prevent hot spots.

Emergency Backup



Order Information

Company	Product Info.	Size (L)	Size (W)	Power	Voltage	LED	Acce.
LT	BPL	03	06	20W	Std.=100-277vac	30K=3000K	DM=1-10VDC DIMMING
		06	12	36W	HV= 200-480VAC	40K=4000K	EM=Emergency Kit
				40W	EV=200-240VAC	50K=5000K	
				50W		57K=5700K	

Feature

- Fits standard T-grid ceilings
- UGR<19
- Suitable for recessed or pendent mounting (with optional accessories)
- 1-10 VDC driver for dimming
- Aluminum-based circuit board
- Warranty: All backed by a 5-year warranty.





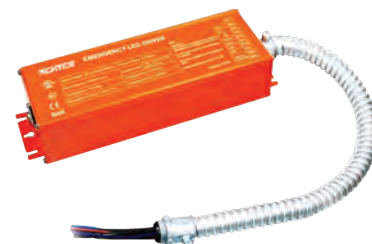
CCT Selectable

3500K 4000K 5000K

RGB Mode



Emergency Backup



Flat Panel led lights feature a slim profile and flush mount on the ceiling lighting. They are solutions to replace fluorescent downlights.

### Feature

- Ultra-slim profile design
- T3 Chimei PMMA LGP
- 1-10 VDC driver for dimming
- Wide Input 120-277 volts
- Flush Mount
- Field-installable LED emergency driver sold separately
- Warranty: All backed by a 5-year warranty.

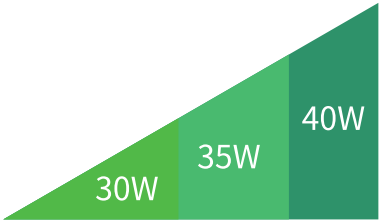
### Order Information

Com.	Product Info.	Size	Power	Input Voltage	CCT	Acce.
LT	RPL	06	8W	Std.=100-277vac	27K=2700K	DM=1-10VDC DIM
			10W	HV= 200-480VAC	30K=3000K	EM=Emergency Backup
			12W	EV=200-240VAC	40K=4000K	
			15W		50K=5000K	
			18W		57K=5700K	
			24W			

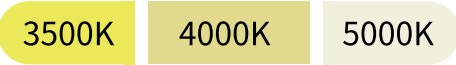




**Power Selectable**



**CCT Selectable**



Power & CCT selective led troffer lights are built with a DIP switches for power (30W-40W) and CCT (3500K / 4000K / 5000K) choice.

**Feature**

- Power Selectable 30W-35W-40W
- CCT Selectable 3500K-4000K-5000K
- High Efficiency 130 LPW
- Suitable for recessed mounting
- 1-10 VDC driver for dimming
- DLC QPL, ETL/cETL, CE, RoHS
- Warranty: All backed by a 5-year warranty.

**Order Information**

Com.	Product Info.	Size (W)	Size (L)	Power Selectablr	Input Voltage	CCT Selectable	Control
LT	TRO	06	06	30W-35W-40W	Std.=100-277vac	35K-40K-50K	DM=1-10DC Dim
		12	03				DA= Dali Dim
							PC=Photocell
							MS=Motion Sensor
							EM=Emergency Kit





### Order Information

Company	Product Info.	Series Code	Power	Input Voltage	CCT	Backlit
LT	FMCL	01	18W	Std.=100-277vac	CTS= CCT Selectable	RGB
			24W	HV= 200-480VAC	30K=3000K	A=Amber
			32W	EV=200-240VAC	40K=4000K	B=Blue
					50K=5000K	P=Pink
					57K=5700K	

### Optional Mode-1

5 CCT Selectable



### Optional Mode-2

Mobile/Wifi/ Voice Control



Round LED ceiling light fixtures come with 5 CCT selected (2700K, 3000K, 3500K, 4000K, and 5000K) and smart RGB changing led backlights.

### Dimension



### Feature

- Quick Flush Installation
- 5 CCT Selected for options
- Smart RGB LED Backlights
- Wide Input 100-240 volts
- High CRI 80 above
- VO fire-rated
- Warranty: All backed by a 2-year warranty.



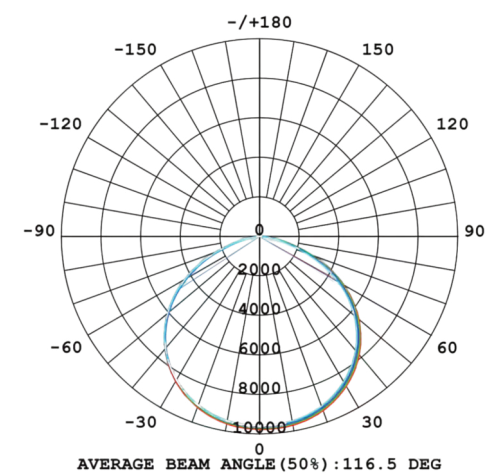


**UFO High Bay**



**Emergency Backup**

LED emergency light has one basic purpose and that is to guide people out of your building in a timely manner when power outages, blackouts, fires, lightning strikes.

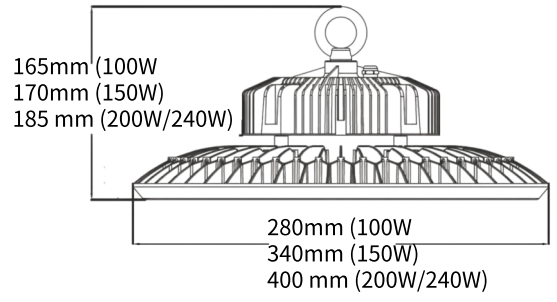


**Feature**

- Light Efficacy: Up to 150 lumens/watt
- CCT: 3000K, 4000K, 5000K, 5700K
- Finish: Black
- Input Voltage: 100-277vac or 347vac
- Dimming: 1-10vdc available
- Battery: Lithium/Li-Fe PO4, 15-30 watts
- Emergency Time: 90~180 minutes
- Occupancy sensor available
- Certificate: DLC QPL  
ETL/cETL listed, CE

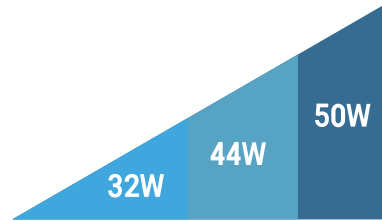
**Order Information**

Company	Product Info.	Size	Power	Input Voltage	CCT	Control
LT	UBA	280	100W	Std.=100-277vac	27K=2700K	EM=Emergency Kit
		320	150W	HV= 347VAC	30K=3000K	DM= 0-10VDC Dim
		400	200W		40K=4000K	PS=Photocell
			240W		50K=5000K	MS=Motion Sensor
					57K=5700K	

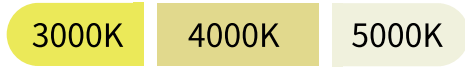




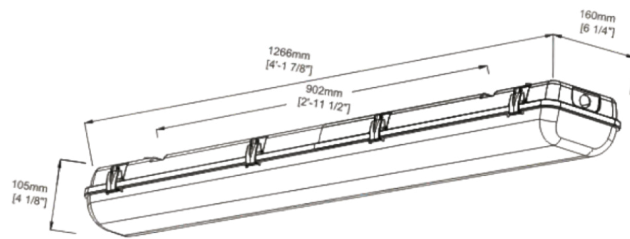
**Power Selectable**



**CCT Selectable**



**Dimension**



LED Linear High Bay Lights are capable of changing to 3 different CCT settings (3000K, 4000K, 5000K) and 3 different wattage settings (32W, 44W, 50W)) with two simple slide switches.

**Feature**

- Light Efficacy: Up to 150 lumens/watt
  - Dimming: 1-10VDC available
  - CCT Selectable: 3000K-4000K-5000K
  - Power Selectable: 32W-44W-50W
  - Emergency battery backup available
  - CRI: 80
  - Input Voltage: 100-277vac or 347vac
  - Occupancy sensor available
  - Certificate: DLC QPL
- ETL/cETL listed, CE/RoHS

**Order Information**

Company	Product Info.	Size	Power Selectable	Input Voltage	CCT	Control
LT	TPA	436	CP=32W-44W-50W	Std.=100-277vac HV= 200-480VAC EV=200-240VAC	T= 30K-40K-50K 30K=3000K 40K=4000K 50K=5000K 57K=5700K	DM=1-10DC Dim DA= Dali Dim PC=Photocell MS=Motion Sensor EM=Emergency Kit

