

DESCRIPTION

The EPHA series explosion-proof LED lights is a Class I, Division 2 factory sealed LED light fixture for general illumination. These fixtures are built to perform effectively and economically in areas that may be difficult to service, expensive to shut down or any location requiring an increased degree of safety. Compared with conventional lighting, the EPHA series LED consumes up to 85% less energy and typically lasts as long as 60,000 hours or more. Moreover, LED is available in various powers, offering a replacement option for existing 150W-100W MH or 500W HID fixtures.

CONSTRUCTION & MATERIALS

- ◆ High-duty die-casting aluminum alloy housing, fully sealed to be dirt and bug proof
- ◆ Impact-proof glass lens
- ◆ IP 66 rating waterproof protection
- ◆ Grey polyester powder-coated finish
- ◆ Taiwan Meanwell / Inventronic driver
- ◆ Stainless steel protective rope

EMERGENCY OPTION

- ◆ UL 924 & CEC title 20 compliant
- ◆ Charge time: 24 hrs
- ◆ Emergency time: 90~180 minutes
- ◆ Charge cycle: >500 times
- ◆ Work Temp. -22°F~+122°F (-30°C~50°C). Especial temperature will be consulted. *

MOUNTING AND WIRING

- ◆ Surface mount/Conduit mount

ENVIRONMENTAL SYSTEM

- ◆ Where flammable vapors, gases, ignitable
- ◆ dusts, fibers or flyings are present;
- ◆ indoors or outdoors
- ◆ Where extremely corrosive, wet, dusty, hot and/or cold conditions exist

ELECTRICAL SYSTEM

- ◆ Input voltage 100-277VAC
- ◆ cLCus-Class1, Division2, Group A,B,C and D, ATEX-II2G Ex d IIC T6 Gb, II2D Ex tb IIIC T80°C Db
- ◆ cLCus,CNEX, CE, RoHS

OPTICAL SYSTEM

- ◆ 130 lm/w output efficacy
- ◆ CCT: 3000K, 4000K, 5000K,5700K, 6500K.
- ◆ 60°/90°/120°/140° beam angle

CORROSION PROOF GRADE

- ◆ WF2

CABLE ENTRY

- ◆ NPT 3/4, NPT 1/2

WARRANTY

- ◆ 5 Years

STANDARD

- ◆ EN61347-1, EN61347-2-13, EN60598-2-1, EN60598-1
- ◆ CAN/CSA -C.22.2 NO. 250.0, C22.2 No. 137, CSA-C22.2 No. 250.13-12
- ◆ UL 8750 (Edition 1), UL 844 (Edition 12)
- ◆ UL 924, UL 1598

Application

Zone I and Zone II Hazardous Locations, Zone 20, Zone 21, Zone 22 and IIA, IIB, IIC explosive gas atmosphere.

Rating

Class1, Division 2, Groups A, B, C and D

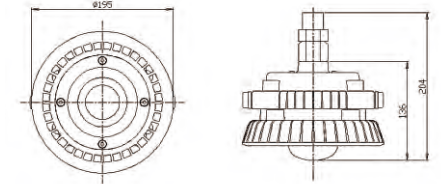
Version

A: 2021-01

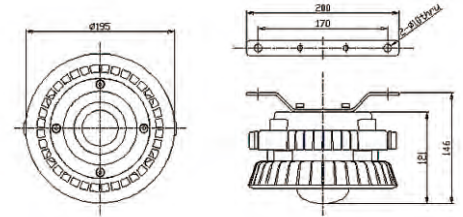


DIMENSION (unit:mm)

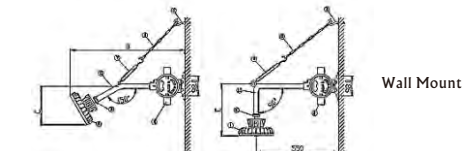
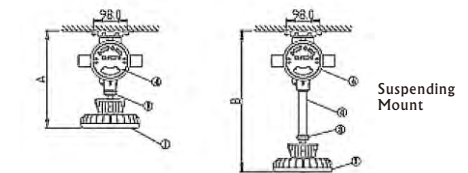
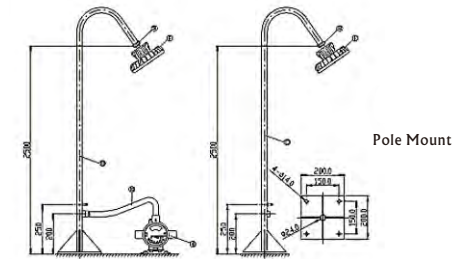
1. Conduit Mount



2. Surface Mount



CONDUIT INSTALLATION



DATA SHEET

Model#	LT-EPHA10	LT-EPHA15	LT-EPHA20	LT-EPHA25	LT-EPHA30
Rated Power	10W	15W	20W	25W	30W
Output Efficacy	130 LPW	130 LPW	130 LPW	130 LPW	130 LPW
Input Voltage	100~277VAC	100~277VAC	100~277VAC	100~277VAC	100~277VAC
Beam Angle	60°/90°/120°/140°	60°/90°/120°/140°	60°/90°/120°/140°	60°/90°/120°/140°	60°/90°/120°/140°
Dimension (DXH)	Ø195X204 mm	Ø195X204 mm	Ø195X204 mm	Ø195X204 mm	Ø195X204 mm
Waterproof	IP 66	IP 66	IP 66	IP 66	IP 66
Battery Available	20W/1.5 hrs	20W/1.5 hrs	20W/1.5 hrs	20W/1.5 hrs	30W-40W/1.5 hrs
Corrosion Proof	WF 2	WF 2	WF 2	WF 2	WF 2
Cable Entry	NPT3/4, NPT 1/2	NPT3/4, NPT 1/2	NPT3/4, NPT 1/2	NPT3/4, NPT 1/2	NPT3/4, NPT 1/2
L70 Life	>50,000hrs	>50,000hrs	>50,000hrs	>50,000hrs	>50,000hrs
Work Temp.	-30°C~50°C				
Ex Mark	Ex db IIC T6 Gb, Ex tb IIIC T80°C Db				

ORDER INFORMATION

Sample Number: LT-EPHA20-30K-EM-SM

Com	Serie	Wattage	CCT	Voltage	Control Mode	Duration (EM)	Mount Style
LT	EPHA	10=10W 15=15W 20=20W 25=25W 30=30W	27K=2700K 30K=3000K 40K=4000K 50K=5000K 57K=5700K 65K=6500K	Blank=100-277VAC DV= 24-48VDC	DM=0-10VDC Dim EM=Emergency Kit	Blank=90 Min. 2H =120 Min. 3H =180 Min.	Std.=Conduit Mount SM=Surface Mount